

## SERVICE NOTE

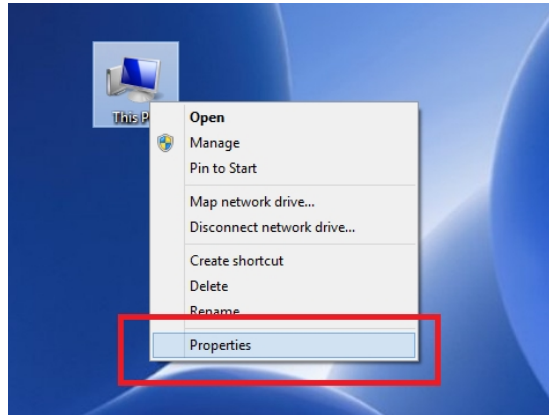
### How to assign COM port number

#### Introduction

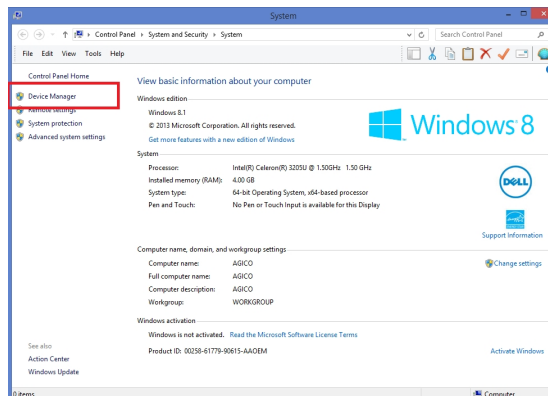
AGICO instruments are connected to a computer via USB-Serial converter ASIX UCAB232. OS Windows automatically assigns a port number to each serial device. To set a port number to "**COM 1**" please follow next steps.

#### Procedure

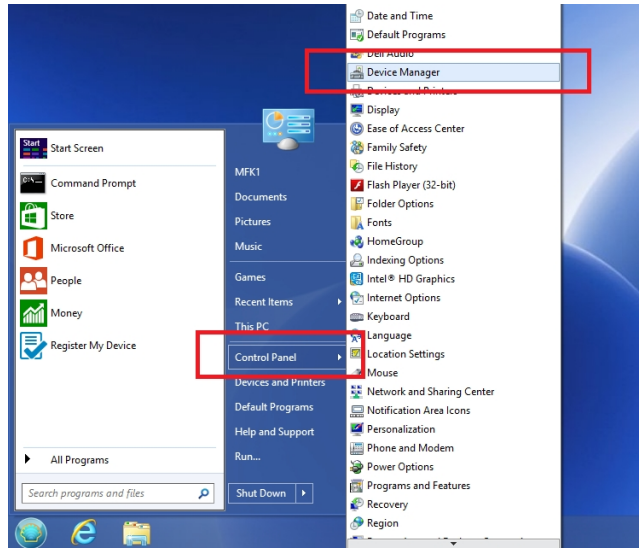
1. Right click on Desktop icon *This PC* and select *Properties*:



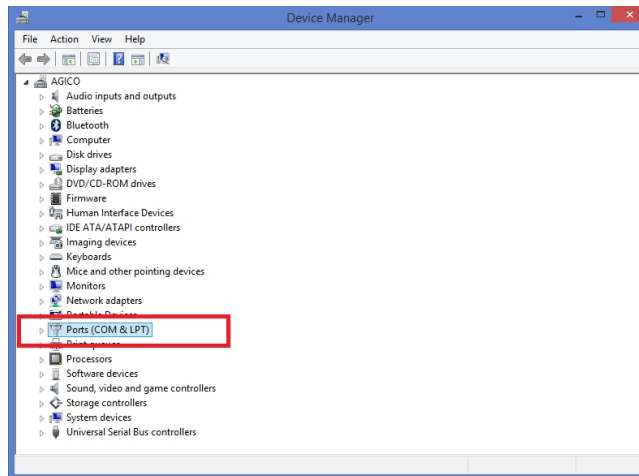
2. From list on left side select *Device Manager*:



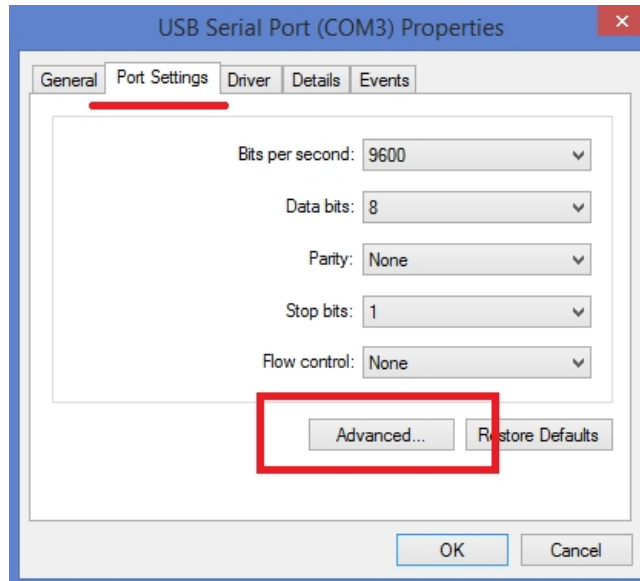
3. Alternatively click on *Start Menu*, then click on *Control Panel* and from list select *Device Manager*:



4. In Device Manager select *Ports (COM&LPT)* and enter *USB Serial Port*:



5. Under section *Port Settings* click on *Advanced*:



6. In first line select COM Port Number to **COM1** or **COM2**. If both these numbers are already in use, please assign some higher numbers to the ports associated to COM1/2 and then assign COM 1/2 to your ASIX USB-Serial converter. Confirm with button OK.

